

Blacquer Ink is a high density black designed especially for printing film positives. It works with the Epson ET14000 printer which prints sheets up to A3+ (33 x 48cm / 13" 19")

WICKED  
PRINTING  
STUFF

Blacquer Ink



Screen Ink and Solvent Supplies Ltd  
Unit 3 Rugby Park, Battersea Road, Heaton Mersey, Stockport  
Phone: 01614426555  
Fax: 01614426556  
[www.inkandsolvents.co.uk](http://www.inkandsolvents.co.uk)

[www.wickedprintingstuff.com](http://www.wickedprintingstuff.com)

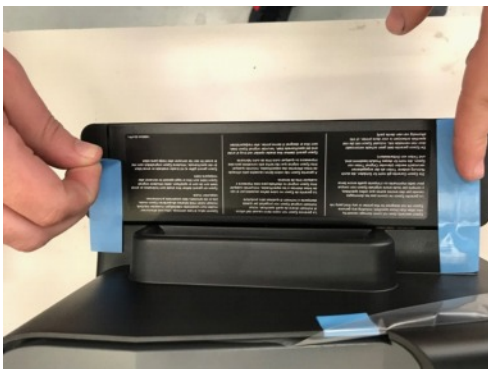
## Installation of the Printer

The printer you have purchased with the Package is an Epson ET14000 (Bulk ink system) You need to install the printer as below :-

**Remove printer from the box – being careful not to lift by the bulk ink tank on the side**



**Remove all blue tape and clear film from the printer**



**Unclip the ink tank on the right hand side of the printer and remove blue tape**

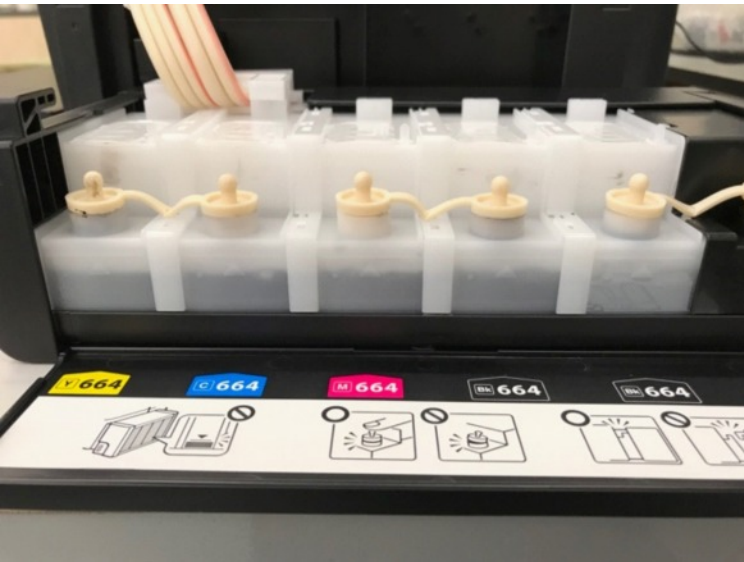


---

**Pull out the plugs from the eco tank and fill all 5 containers with approximately 50 ml of BLACQUER ink.**



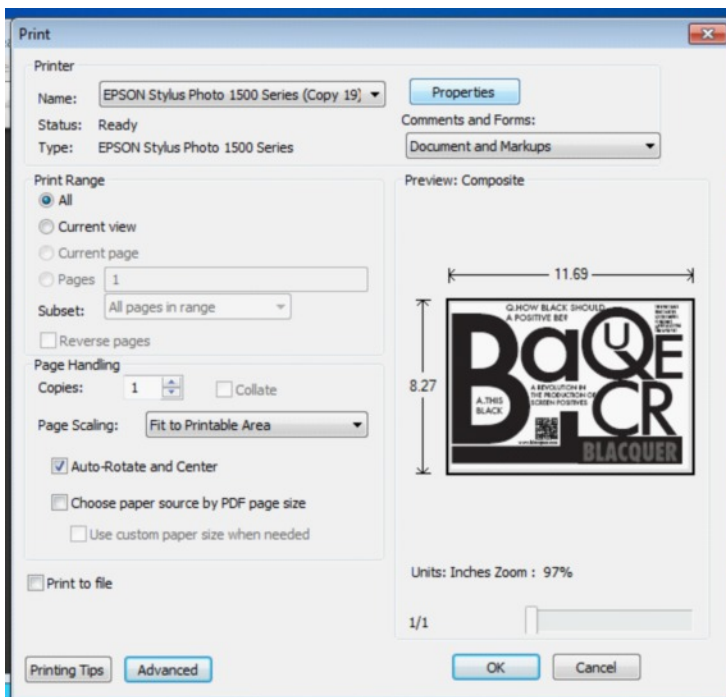
**Replace the plugs.**



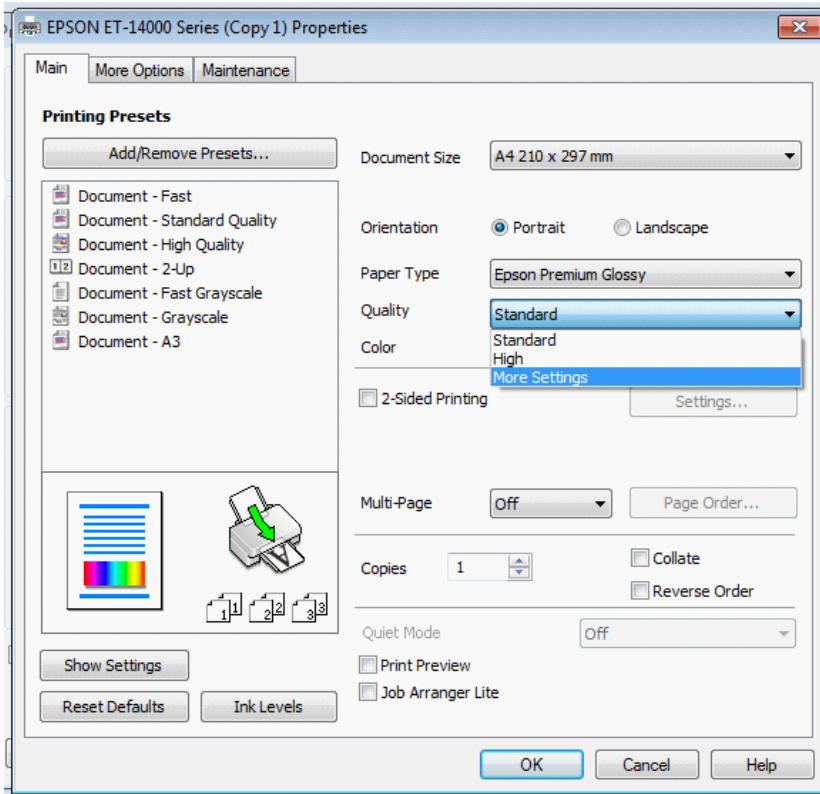
**Re-clip ink tank back onto the side of the printer**



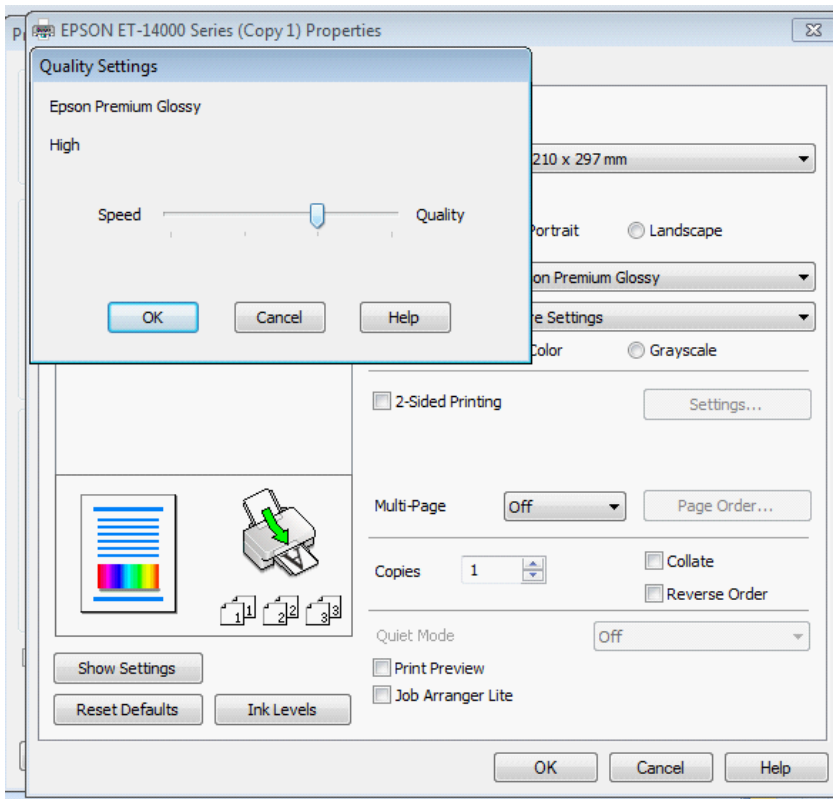
- 1.) Power up Machine
- 2.) Press Ink button for 3 seconds and leave the printer for around 20 mins until the power light is solid green. Do not open the cover whilst this priming is taking place.
- 3.) Once Printer has primed and the green power light is solid green, install the Epson software from the disc supplied or directly from the Epson website.
- 4.) Adjust the settings in the Epson software to ensure the correct ink levels are printed:
  - a. Open a file to print
  - b. Click file Print, the Epson print box should appear.
  - c. Click on 'Properties'



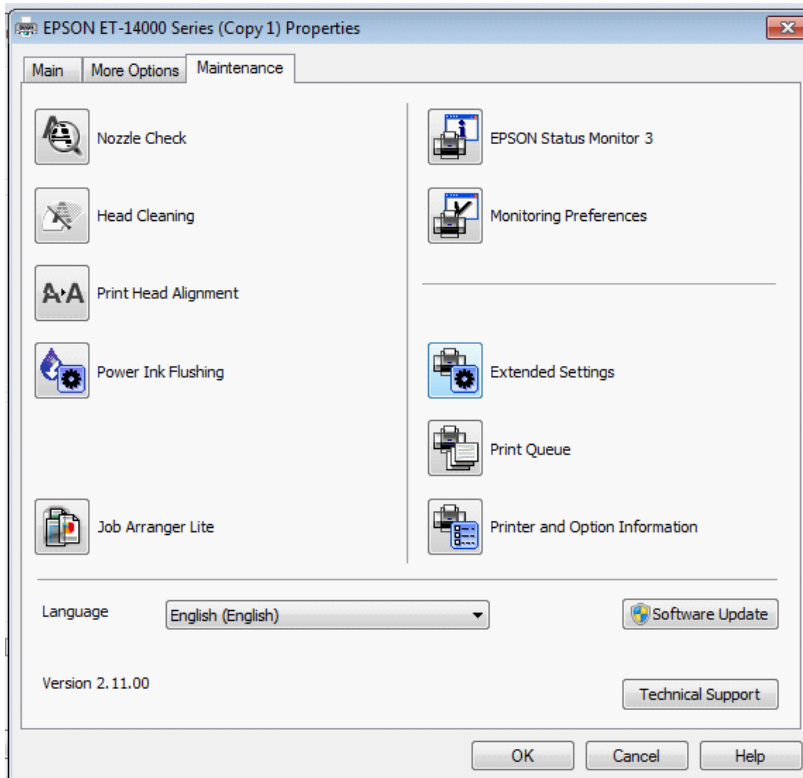
Choose Epson Premium Glossy in the paper type field and 'More settings' in the Quality field



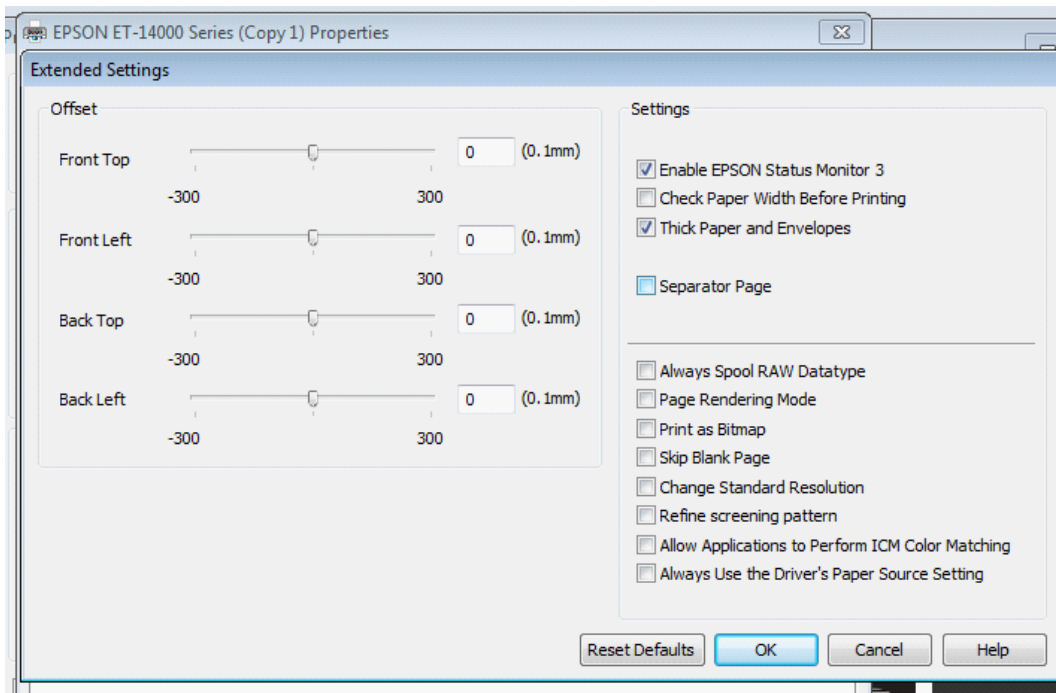
When the Quality slider bar pops up, slide along to where the image below shows. For most instances setting the quality to be high is sufficient for most artwork.



**Choose the Maintenance tab at the top**



**Tick the 'Thick paper and envelopes' section from Extended Settings**



**Remember for best results make sure your artwork is BLACK**

Clean the syringe and needle used for filling the tanks with the cleaning solution provided. DO NOT USE TAP WATER TO DO THIS.

Draw up cleaning solution and discard until the syringe is drawing up clean liquid. The cleaner/ink waste can be disposed of down the sink. THE CLEANING FLUID IS ONLY FOR CLEANING OUT THE SYRINGES.

